



**CERTIFICATE OF ANALYSIS**

MAIDAMAX (M) SDN BHD  
 Lot 10-13, Jalan PKNK 1/2,  
 Kawasan Perusahaan Sg. Petani,  
 08000 Sungai Petani,  
 Kedah.  
 Tel: 04-441 4644  
 Fax: 04-441 4649  
 Attention: Mr. Samuel

Certificate No	: AMC/nC2106/068
Sample Log Code	: nC2106/101
Sample Received Date	: 01-Jun-2021
Issuance Date	: 22-Jun-2021

Sample Description : Natural Rubber Color Fish Teether  
 Sample Information : Trace No: 2021/05/895  
 Analysis Results :

Parameter	Standard Method	Limit	Unit	Analysis Result
Cadmium	In house method based on IEC 62321 Ed.1.0 2008	100	mg/kg	ND(<10)
Hexavalent Chromium	In house method based on IEC 62321 Ed.1.0 2008	1000	mg/kg	ND(<10)
Lead	In house method based on IEC 62321 Ed.1.0 2008	1000	mg/kg	ND(<10)
Mercury	In house method based on IEC 62321 Ed.1.0 2008	1000	mg/kg	ND(<10)
Decabromobiphenyl	In house method based on IEC 62321 Ed.1.0 2008	1000	mg/kg	ND(<50)
Decabromodiphenyl ether	In house method based on IEC 62321 Ed.1.0 2008	1000	mg/kg	ND(<50)
Dibromobiphenyl	In house method based on IEC 62321 Ed.1.0 2008	1000	mg/kg	ND(<50)
Dibromodiphenyl ether	In house method based on IEC 62321 Ed.1.0 2008	1000	mg/kg	ND(<50)
Heptabromobiphenyl	In house method based on IEC 62321 Ed.1.0 2008	1000	mg/kg	ND(<50)
Heptabromodiphenyl ether	In house method based on IEC 62321 Ed.1.0 2008	1000	mg/kg	ND(<50)
Hexabromobiphenyl	In house method based on IEC 62321 Ed.1.0 2008	1000	mg/kg	ND(<50)
Hexabromodiphenyl ether	In house method based on IEC 62321 Ed.1.0 2008	1000	mg/kg	ND(<50)
Monobromobiphenyl	In house method based on IEC 62321 Ed.1.0 2008	1000	mg/kg	ND(<50)
Monobromodiphenyl ether	In house method based on IEC 62321 Ed.1.0 2008	1000	mg/kg	ND(<50)
Nonabromobiphenyl	In house method based on IEC 62321 Ed.1.0 2008	1000	mg/kg	ND(<50)
Nonabromodiphenyl ether	In house method based on IEC 62321 Ed.1.0 2008	1000	mg/kg	ND(<50)
Octabromobiphenyl	In house method based on IEC 62321 Ed.1.0 2008	1000	mg/kg	ND(<50)
Octabromodiphenyl ether	In house method based on IEC 62321 Ed.1.0 2008	1000	mg/kg	ND(<50)
Pentabromobiphenyl	In house method based on IEC 62321 Ed.1.0 2008	1000	mg/kg	ND(<50)
Pentabromodiphenyl ether	In house method based on IEC 62321 Ed.1.0 2008	1000	mg/kg	ND(<50)
Tetrabromobiphenyl	In house method based on IEC 62321 Ed.1.0 2008	1000	mg/kg	ND(<50)

AMCEN LAB SDN BHD

## CERTIFICATE OF ANALYSIS


Certificate No

: AMC/nC2106/068

Parameter	Standard Method	Limit	Unit	Analysis Result
Tetrabromodiphenyl ether	In house method based on IEC 62321 Ed.1.0 2008	1000	mg/kg	ND(<50)
Tribromobiphenyl	In house method based on IEC 62321 Ed.1.0 2008	1000	mg/kg	ND(<50)
Tribromodiphenyl ether	In house method based on IEC 62321 Ed.1.0 2008	1000	mg/kg	ND(<50)
Polybrominated Biphenyl (PBB)	In house method based on IEC 62321 Ed.1.0 2008	1000	mg/kg	ND(<50)
Polybrominated Diphenyl Ether (PBDE)	In house method based on IEC 62321 Ed.1.0 2008	1000	mg/kg	ND(<50)

ND denotes not detected

**Remark :** RoHS result of above sample complied with RoHS Directive 2011/65/EU Annex II (amended by Directive (EU) 2015/863).



ChM. Chew Yi Ting  
Sr. Chemist  
B.Sc (Hons) Chemistry  
M/5012/8255/18

## **CERTIFICATE OF ANALYSIS**

Certificate No

: AMC/nC2106/068



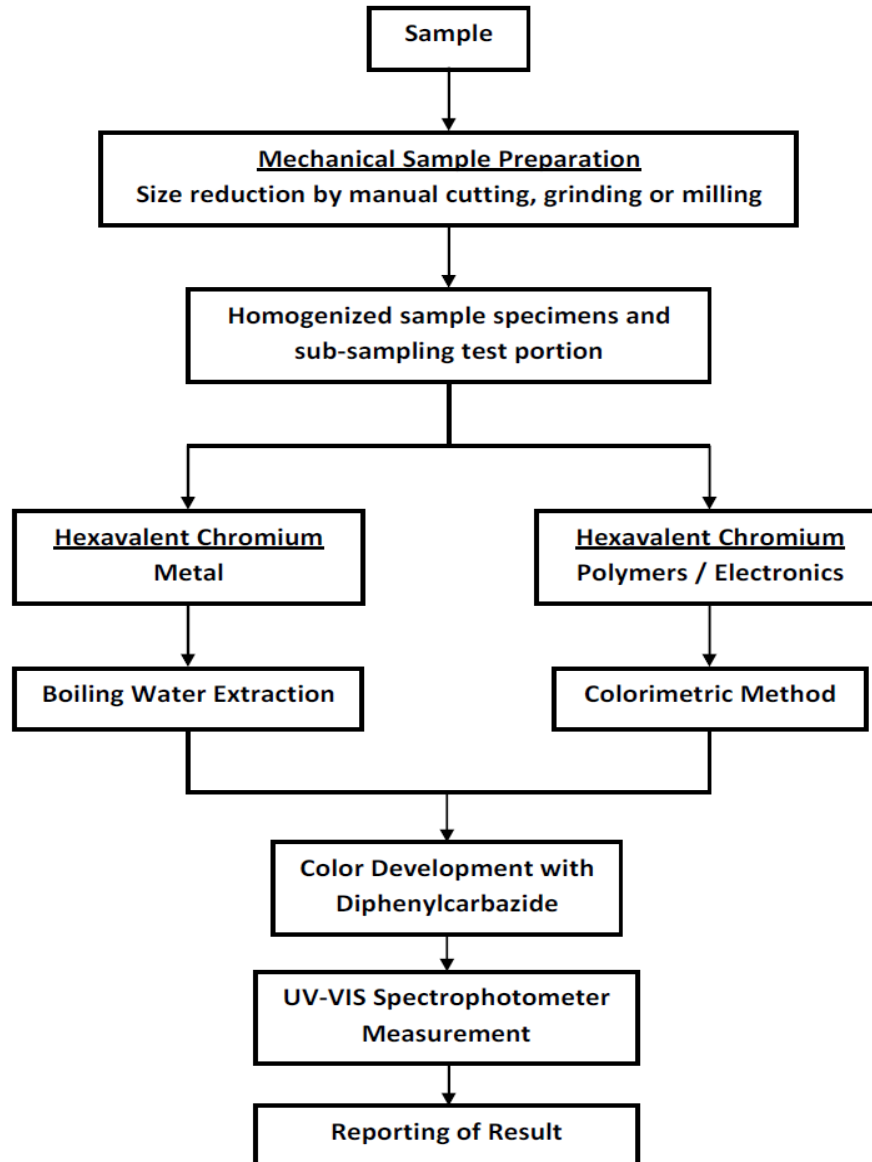
Picture of sample

## CERTIFICATE OF ANALYSIS

Certificate No

: AMC/nC2106/068

### Flow Chart for Analysis of Hexavalent Chromium in Method IEC 62321

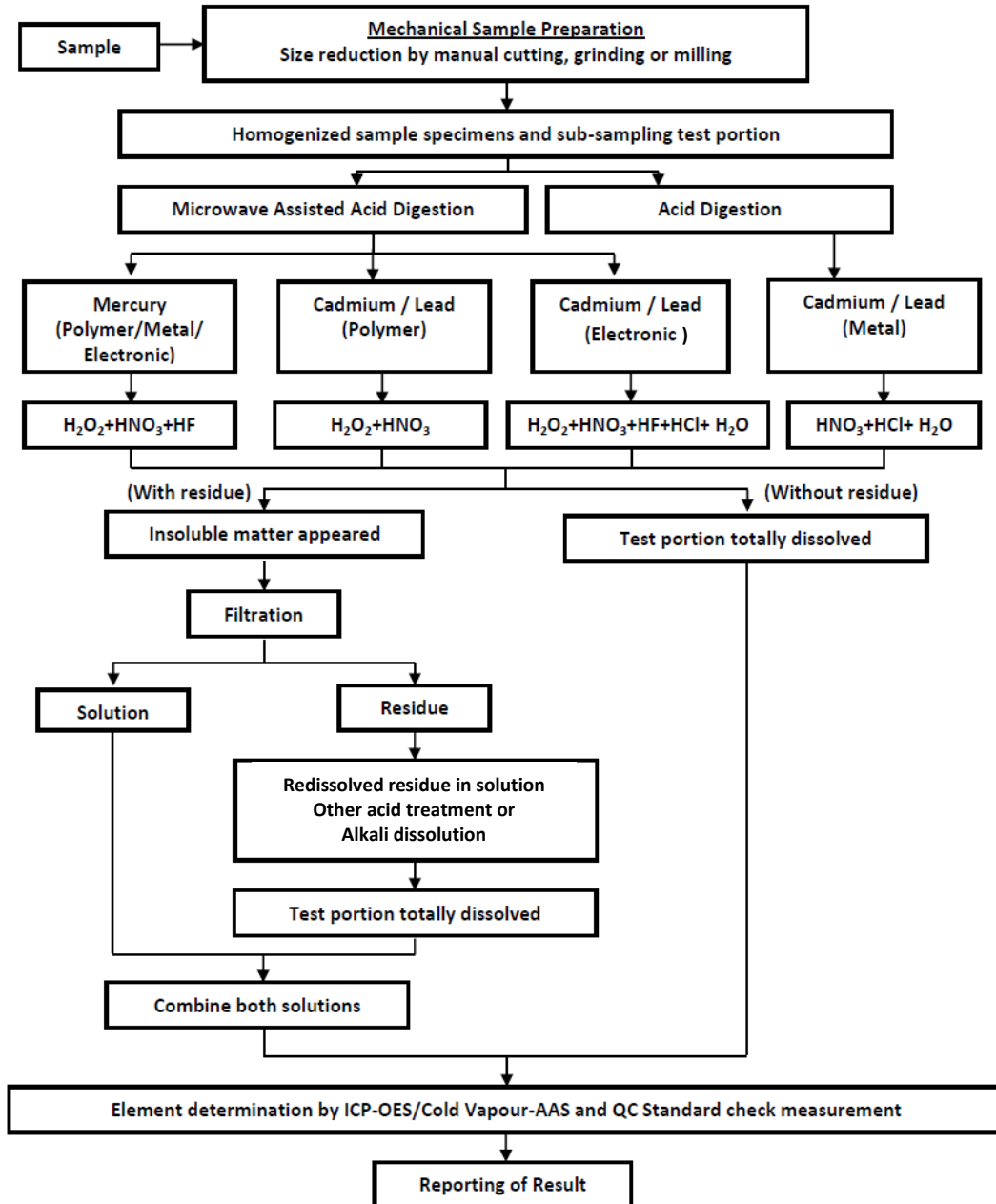


**CERTIFICATE OF ANALYSIS**

Certificate No

: AMC/nC2106/068

**Flow Chart for Analysis of Hg, Cd and Pb in Method IEC 62321**



**CERTIFICATE OF ANALYSIS**

Certificate No

: AMC/nC2106/068

**Flow Chart for Analysis of PBB and PBDE in Method IEC 62321**

